

# Geo WPS 1.0

## User Guide



Tension Software - We Make Software for Mac - Pomola.com

Geo WPS © 2010-2011 Tension Software all rights reserved

Every effort has been made to ensure that the information in this manual is accurate.

Tension Software is not responsible for printing or clerical errors.

Other company and product names mentioned herein are trademarks of their respective companies.

# Welcome to Geo WPS

## GPS without GPS

Geo WPS is a Cocoa application that let track your current position using Apple geo-tracking implemented natively from OS X 10.6 Snow Leopard and successive. It displays the position of the mac showing it in a map, continuously updated, without using a GPS.

To work, the Mac requires a internet connection, using a bluetooth cell phone as modem is ok or also a usb internet key.

The Mac requires also airport turned on to let wi-fi geo-tracking to work. It doesn't need to be connected to any wi-fi point to work, it just has to be on to let it recognize the wi-fi around and from them calculate your position (without connecting to them) It does not require a GPS to calculate your position and it works even when you are in closed environments and a GPS can't work at all.

Position is calculated showing also the circle of your possible position with max error in calculating your position (experience tells that often despite the possible error, your position is calculated with great precision)

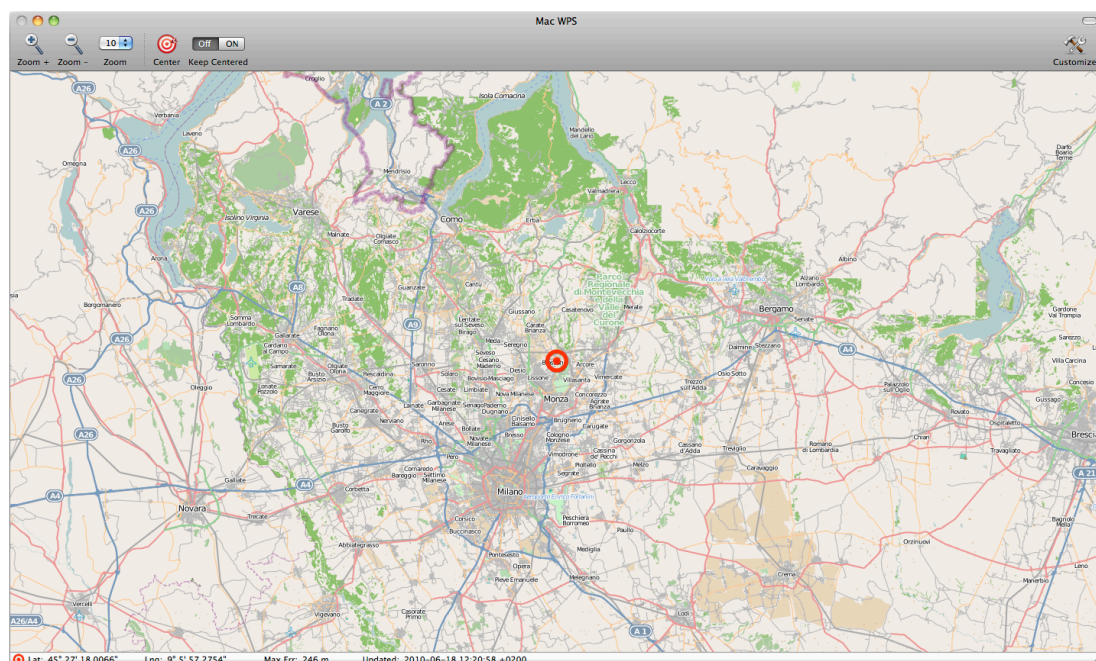
Note that this is just the initial release 1.0

Let us know your suggestions to functionalities to add to next releases

### WARNING:

**Do not use Geo WPS for purpose where the wrong calculation of your position can generate any kind of damage to objects or persons.**

**Geo WPS was not intended for that 'critical' use!**



# Getting Started

## Easy of use

Geo WPS is plain simple to use.

Launch it and it will start to calculate your current position

To do it, Geo WPS detect any wi-fi around the Mac (without the need to connect to them) and calculates your position using these data.

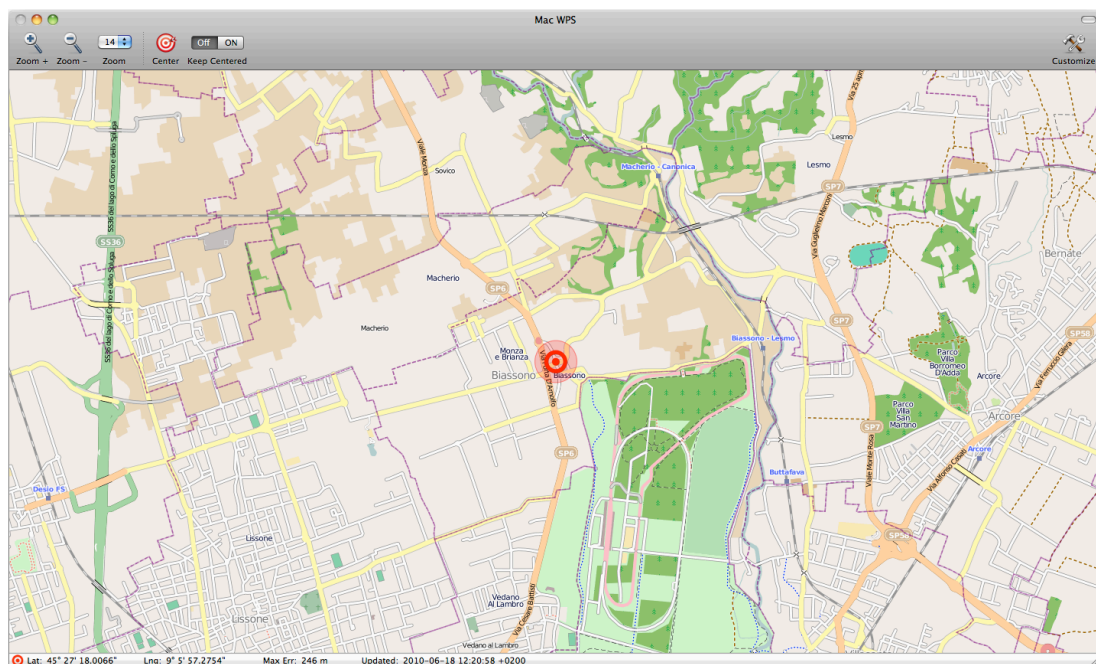
Calculation of the position requires an internet connection because the position calculation requires a query to a server (managed by an Apple Library on OS X).

Your position in the world is shown via an interactive Map.

You can zoom and move the map up to a 18 level zoom.

The data for the worldwide map are also pulled form the internet, so another reason you need an active internet connection. If you are on a vehicle as example, it would be OK using a usb internet key to provide an active internet connection.

To keep track of your moving position you can use the 'Keep Centered' feature to always maintain your position at the center of the screen and move the map under it.



# Reference

Geo WPS is a Cocoa application able to show your current position in the world. To be able to do so Geo WPS uses the geo-tracking function implemented inside Mac OS X 10.6 (Snow Leopard) and successive.

To work Geo WPS has to be run on a Mac connected to internet. Any kind of connection is OK.

Geo WPS needs airport wi-fi on your Mac to be turned on. It doesn't require a wi-fi connection, you can be connected on the net via a bluetooth modem or via a USB internet key but airport on your Mac must be turned ON or geo-tracking won't work because it calculates your position based on all the wi-fi station it detects around, without connecting to them, just detecting their presence.

In case you are connected on the net via wi-fi it can work too.

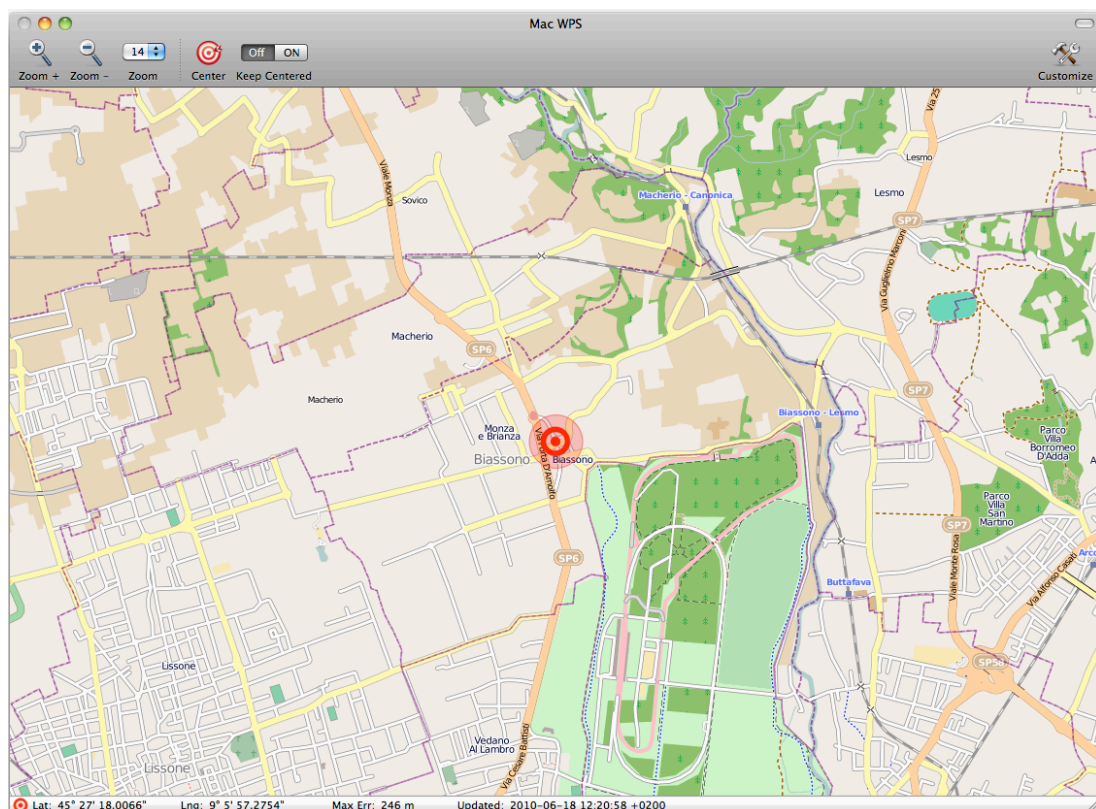
## Geo WPS window

The Geo WPS window is very simple.

It shows the map of your current location and you can move in any place dragging on it with the mouse.

You can use different level of zoom (from 0 to 18) to view the map.

In the bottom part of the window are displayed the coordinate of the current position and the max error in estimating the position.



## Zooming on a Specific Area

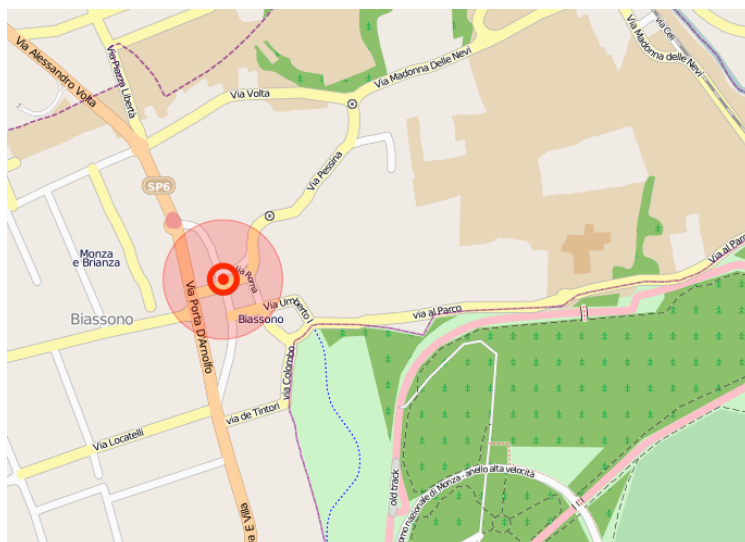
To zoom on a specific area press the shift keyboard and maintaining the key pressed click drag and release to specify a rectangle on the map, the rectangle will be used to zoom on it in the map with the best zoom level adapted to the rectangle you specified

## Center on your current position

If you need to center your current position in the map, use the 'Center' command from the Tools menu or click the Center icon in the toolbar

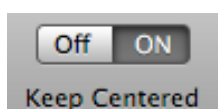


The map will scroll to the current position using the current zoom level  
Your current position is shown on the map using a circle red icon  
The semi-transparent circle around your current position show the possible error area. Your effective position can be inside the circle (the larger is the circle the more is the estimated possible error)



## Keep Centered

If you are on a vehicle your current position moves, to keep track of it you can select the 'Keep Centered' from the menu or from the toolbar  
You can select from the preferences to have the application start with the 'Keep Centered' feature turned on.



## Current Coordinate

The lower bar shows the current coordinate and the max error range in calculating it.

The user can change in the preferences the way the coordinate are displayed from 3 ways:

- 22° 35' 43.567"
- 25° 11.567671'
- 32.842365412°

Lat: 45° 27' 18.0066"    Lng: 9° 5' 57.2754"    Max Err: 246 m    Updated: 2010-06-18 12:20:58 +0200

## Max Error

Max error in detecting your current position is shown in the bottom bar. It can be shown in meters or feet changing the setting from the preferences

## Consideration about geo-tracking

WPS geo-tracking is based on wi-fi position calculation.

It works only in areas where wi-fi station are present. If they are mapped by the geo-tracking database the algorithm is able to determinate your position.

the method is not based on satellite system as GPS, so it works also in covered area in closed environments, the drawback is that it can't work in not urbanized area without wi-fi station in the zone. It works perfectly in dense constructions areas with a large presence of wi-fi stations as in any populated modern cities.

This release 1.0 was tested in Milano and it works perfectly, updating position around any 100 m (300 feet) giving always a good approximation of the position. It works perfectly!

## Preferences

### General

Coordinate format:

The user can change in the preferences the way the coordinate are displayed from 3 ways:

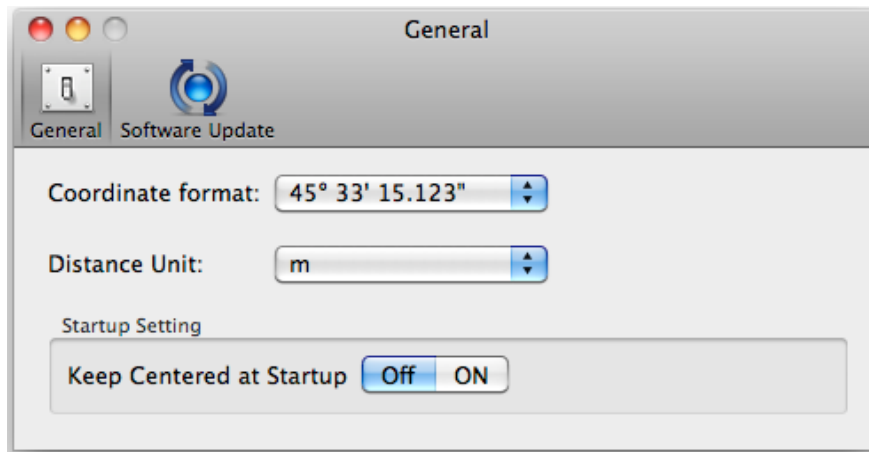
- 22° 35' 43.567"
- 25° 11.567671'
- 32.842365412°

Distance Unit:

The user can select the measure unit used for displaying the max error in showing position from meters or feet

Starting Setup:

The user can select if to start the application with 'Keep Centered' on



## Update

**\* Update section is not available in the App Store Release (if you purchased via the App Store, to obtain an update use the App Store Update function)**

Geo WPS can inform you if an update is available.

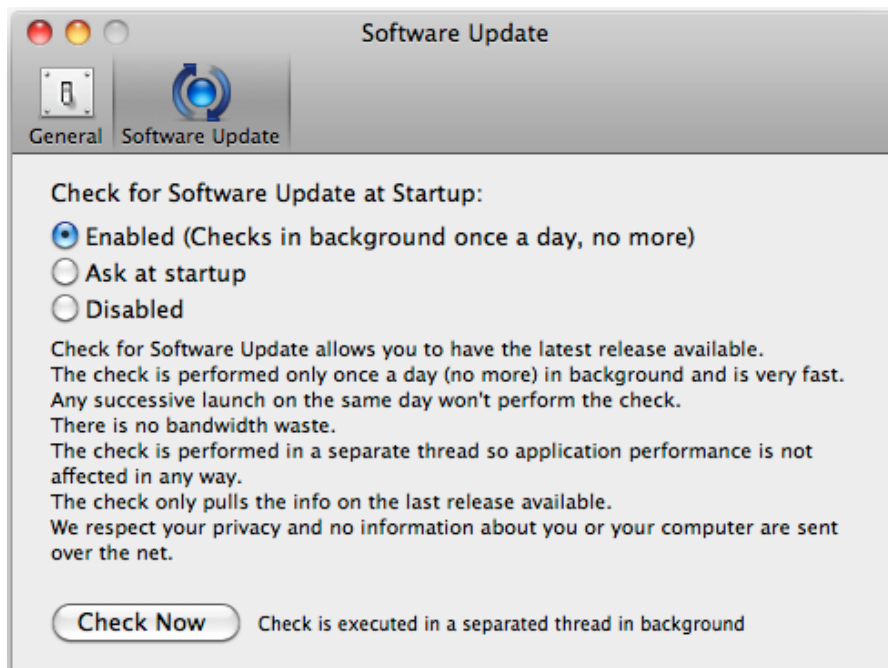
If enabled, the application will check no more than once a day.

'Ask at startup' asks you if you like to have the application check if an update is available when you start the application

'Disabled' avoids any check

When you check if an update is available, the application ping the Tension Software server and receive an answer about the last release available, the application can in that way know if its obsolete or not.

In case the application will ask you if you like to download an upgrade.



If you download the upgrade, you need to install it.

A common error is to download an upgrade and install it maintaining the old application somewhere on the hard disk.

Then using to open the documents sometime the old application and sometime the new one. This cause some problems\*. To avoid it simply install your application in the place dedicated to it, the Application folder. When you install an update on the standard Application folder, the system will ask if you want to replace the old one with the new, answering yes will install the new one replacing the old.

## Help

Geo WPS provides a standard help menu ...maybe you already found it!  
Under the help menu use the Visit Pomola.com to access our site a download the very last version of Geo WPS and other software for Mac we make.

### Licensing the program

You can use the command under the Help menu to access our web site  
From there you can purchase a license to use Geo WPS using one of the payment service we provide. It easy, fast, and secure.

Purchasing a license remove all the limitations inside Geo WPS

If you are evaluating to purchase this software, consider that it is realized in Cocoa and in Objective-C, the basis of all the last generation software for mac OS X, and you can expect a long life for any products based on Cocoa. Mac OS X and the Cocoa technology are estimated to have really really long life with continuous improvements (more then the life of Mac OS Classic of around 15 years) because Mac OS X and Cocoa are solid technologies (Mac OS classic was just a toy if confronted with Mac OS X) and new features can be added without problems as the time request them.

This software is Universal Binaries and runs native on both PPC Mac and Intel Mac.

If you decide to purchase a license, thank you for your support. When you see on the net how much quality software there is for Mac and how much software is added every day it is because users support small developers buying software.

## Support

You can also obtain support using the 'Support Email...' command. An email will be prepared using your email client with the correct address to send to.

Yes, we answer to your emails.

## Geo WPS is a Commercial Program

You can use our software for a test period of 10 days

After that you are required to buy a license to be legally authorized to continue to use our software

## Licensing Geo WPS

**\* In case of the App Store release, a license is already included with your App Store purchase and you don't need to buy a license**

You can buy a license to use our software using the 'Buy License' command under the Help menu.

You will open in your browser our license web page on our web site  
From there you can buy a license to use Geo WPS using one of the payment service we provide. It easy, fast, and secure and all most important form of payment are accepted.

We carefully selected or international reseller to be sure the buying experience for our customer will be as best as possible and without any problems.

After purchase you will receive from Tension Software a license email containing your full name and a license code

Open the License dialog with the command 'license' under the 'Geo WPS' menu and insert these data in the License dialog. The software will become fully licensed and fully enabled for future use.

Name and license code are remembered by the program and don't need to be re-inserted at successive launch.

In case you move on a new Mac you need to re-insert your name and license

The license is valid for a single Macintosh. You can purchase for two Mac as long as they are not used at the same time, as example a desktop and a laptop used by the same user.

## Consideration about Licensing Geo WPS

**\* In case of the App Store release a license is already included with your App Store purchase and you don't need to buy a license**

If you are evaluating to purchase this software, consider that it is realized using the Cocoa library (the native last generation library on Mac OS X) and in the Objective-C language (the first class language development on Mac OS X)

The two technology are the basis of all the last generation software for Mac OS X, and you can expect a long life for any products based on Cocoa and coded in Objective-C.

Mac OS X and the Cocoa technology are estimated to have a really long life with continuous improvements (more then the life of the now ancient Mac OS Classic which was around 15 years) because Mac OS X and Cocoa are solid technologies (Mac OS classic was just a toy if confronted with Mac OS X) and new features can be added without problems by Apple when they are required.

It was not so easy with previous generation of OS.

In our opinion the Cocoa technology will live and grow for many decades from now, so Cocoa based software are today the best way to go if you have to select software to use.

If you decide to purchase a license, thank you for your support.

When you see on the net how much software there is for Mac and how much software is added every day, it is because users support small developers buying software and because the Macintosh software ecosystem it's really a great place to work due to the incredible success the Macintosh has today and the common feeling of the community (we use the Mac because we love doing things in a smart way).

## Credits

© OpenStreetMap contributors, CC-BY-SA