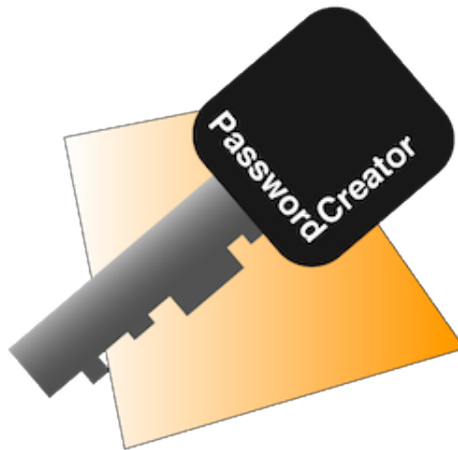


Password Creator 1.0

User Guide



Tension Software - We Make Software for Mac - Pomola.com

Password Creator © 2011 Tension Software all rights reserved

Every effort has been made to ensure that the information in this manual is accurate.

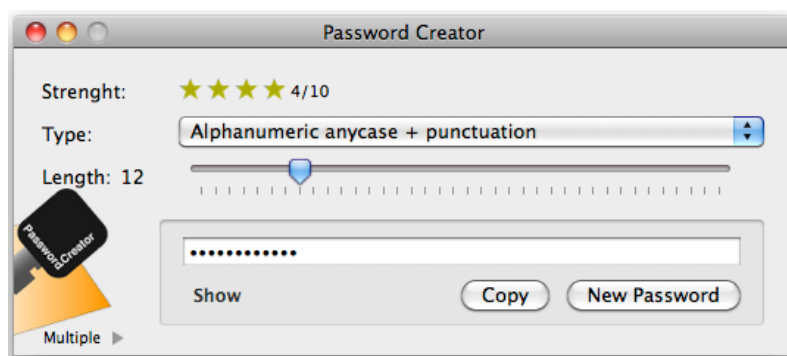
Tension Software is not responsible for printing or clerical errors.

Other company and product names mentioned herein are trademarks of their respective companies.

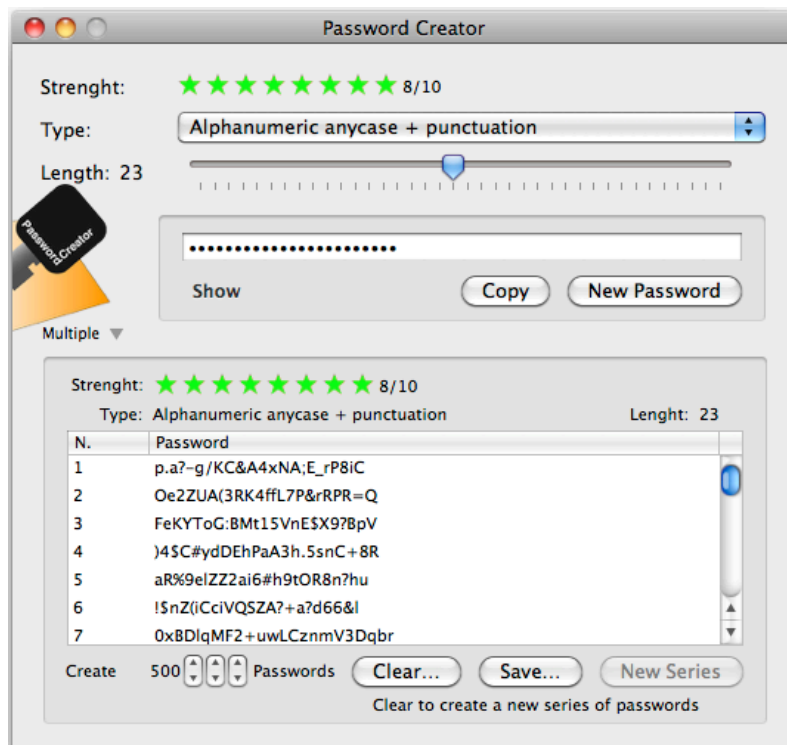
Welcome to Password Creator

The tool to create passwords

Password Creator is a Mac OS X application to create passwords. It can create a single password or a series of passwords (even thousands in a single click in the 'multiple' mode) and save them on disk if you need to create an array of passwords or simply random strings for various uses. It can work as a small utility windows when you need to create a single password



or as a larger windows showing in a table the list of the passwords created and ready to be saved when you work in the 'multiple' creation mode



Using Password Creator

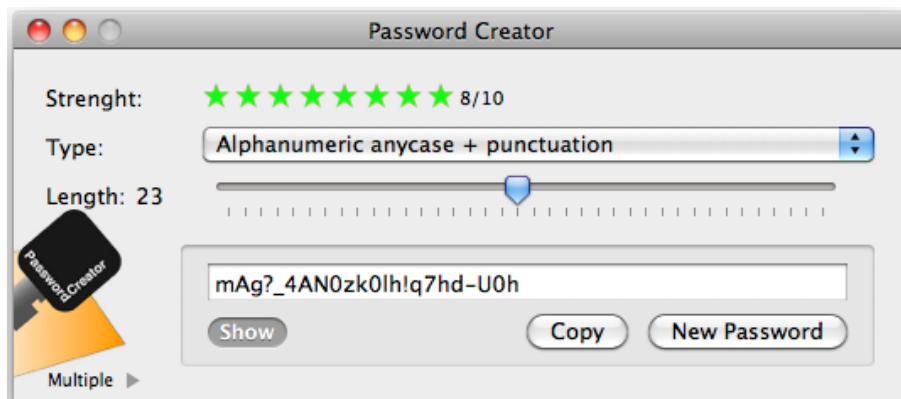
Getting started with Password Creator

Start Password Creator

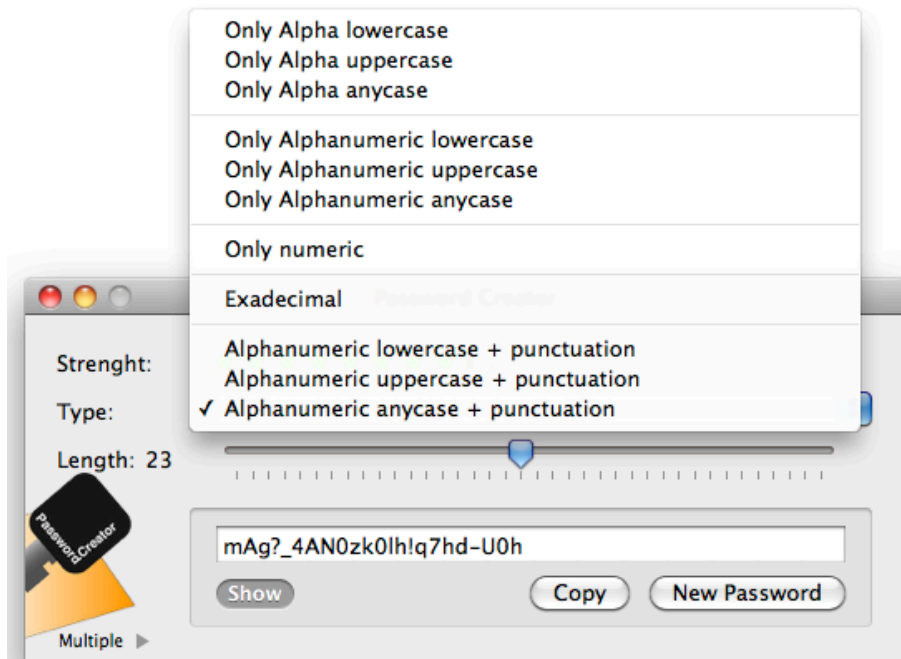
When started it creates a new password at startup

You can press the copy button to copy it in the clipboard

To make the password readable you can press the 'Show' button



If you need a different type of password you can select it from the popup menu



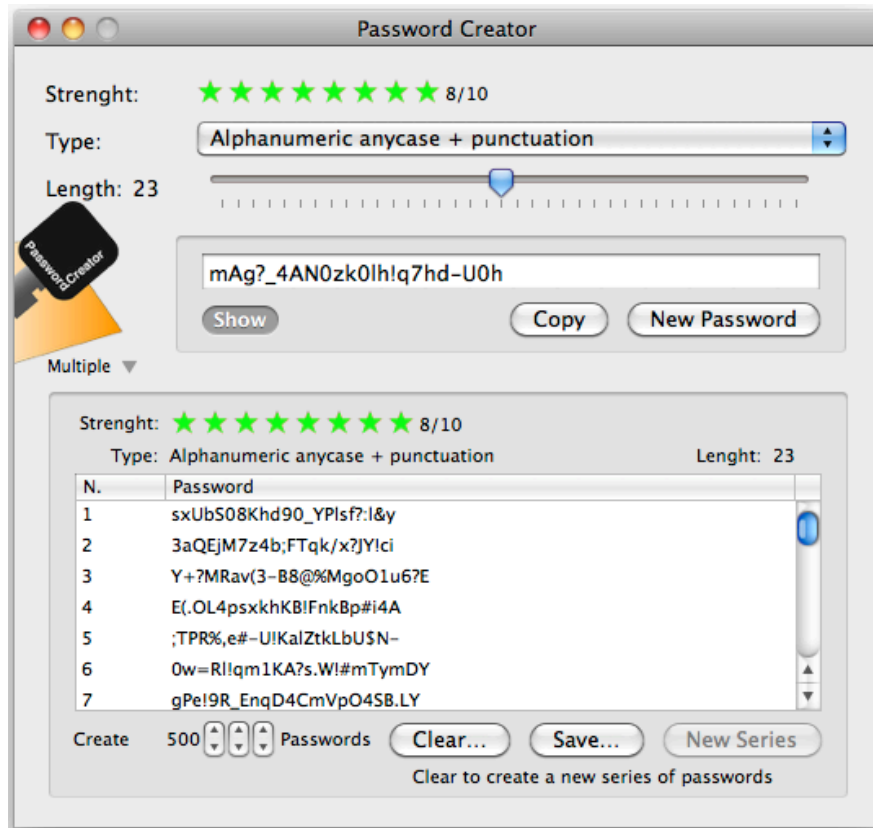
Pressing the 'New Password' button create a new password.

The 'Copy' button copies it in the clipboard.

Length allows to change the length of the generated password.

On the top of the window you have a live indication of the password quality, where for quality we indicate how much difficult is to be guessed. If you change the length or the password type, the generated password is changed to reflect it.

Pressing the 'Multiple' button you can enlarge the window and use the



'Multiple Password' creation feature:

- Select how many passwords you want to create
- Select in the upper part the type of the password and its length
- Press 'New Series'

The table is filled with the passwords.

You can save them on disk in a text file pressing the 'Save...' button.

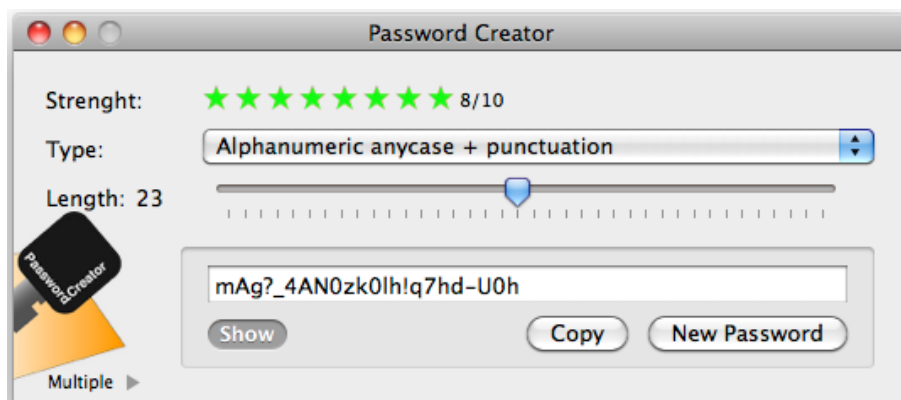
To create a new series press the 'Clear' button and you are ready to go again.

Reference

Creation of a single Password

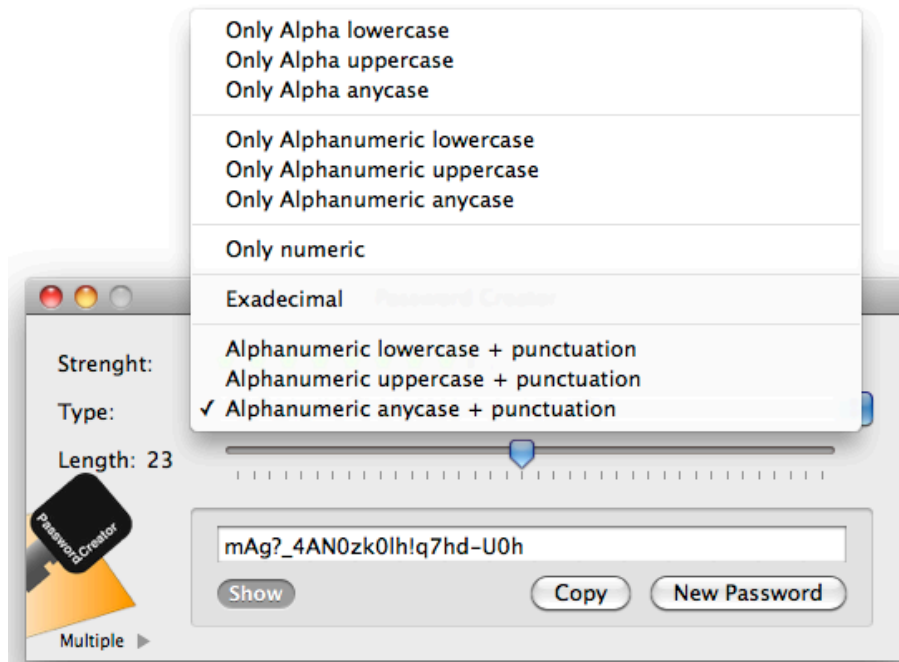
Password Creator allows in the small window mode to create single passwords

The top indicator gives a view of the quality of the password created
For quality we indicate how much difficult is the password to be guessed using crack methods.



The popup menu allows to select the type of password to generate:

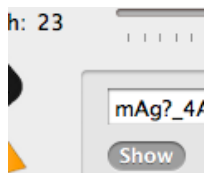
- Only Alpha lowercase. Example: abcd
- Only Alpha uppercase. Example: ABCD
- Only Alpha anycase. Example: AbCd
- Only Alphanumeric lowercase. Example: abc1
- Only Alphanumeric uppercase. Example: ABC1
- Only Alphanumeric anycase. Example: AbC1
- Only Numeric. Example: 1234
- Hexadecimal. Example: 123A
- Alphanumeric lowercase + punctuation. Example: ab1-
- Alphanumeric uppercase + punctuation. Example: AB1-
- Alphanumeric anycase + punctuation. Example: Ab1-



You can change the length of the password using the length control



You can show the password in a readable mode pressing the show button

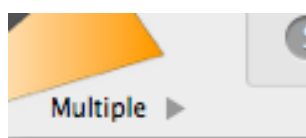


You can copy the password in the clipboard pressing the Copy button. Pressing the 'New Password' button always generate a new password.

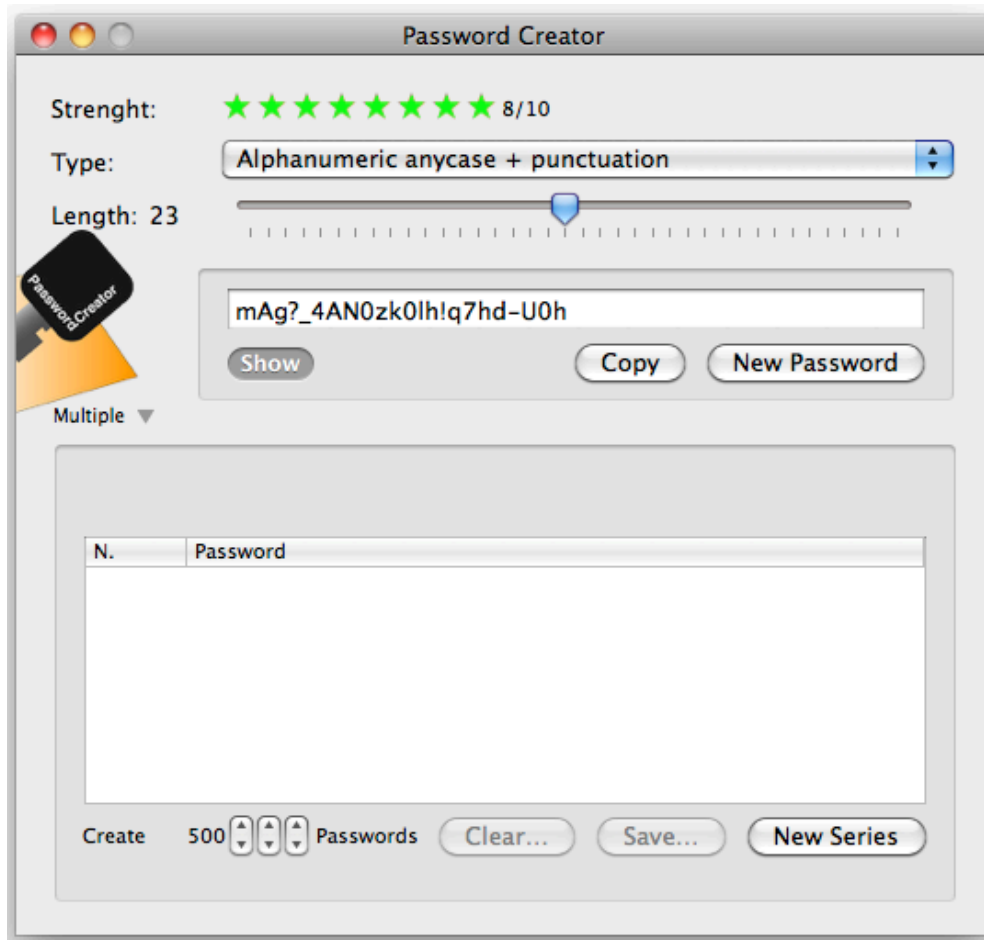


Creation of multiple password

Password Creator allows to create multiple passwords in a single click. To access the 'Multiple' section press the small arrow at the lower left corner of the window

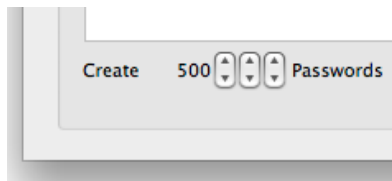


The window will enlarge showing the 'Multiple' area

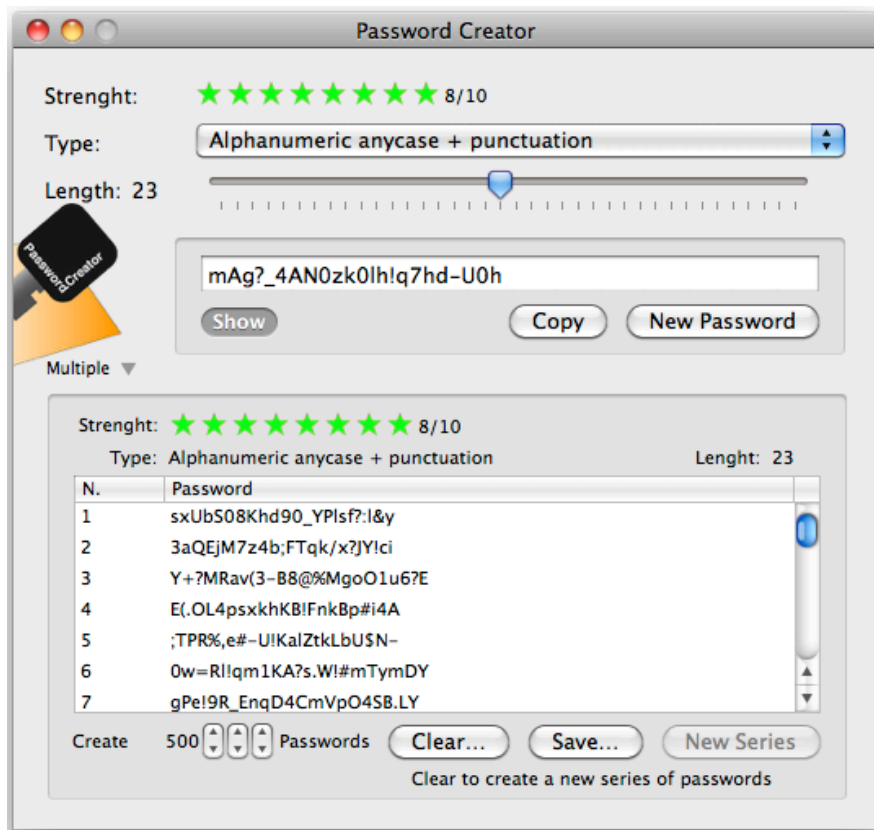


The password type and the length used for the multiple creation, are the one in the upper of the window, as for the single creation.

You can select how many password generate using the 3 small controls in the lower left part of the window

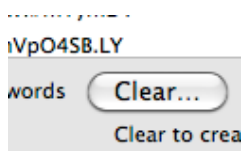


Pressing the 'New Series' button, the app will generate a series of passwords.

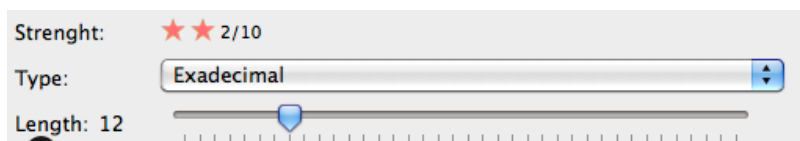


If you need to generate another series of password, you need to clear in advance the series already generated.

Pressing the 'Clear' button the list is emptied.

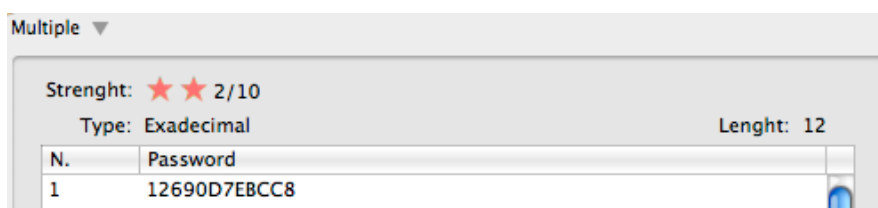


To change the type and length of the series generated, adjust the type and length as you like using the controls in the upper part of the window

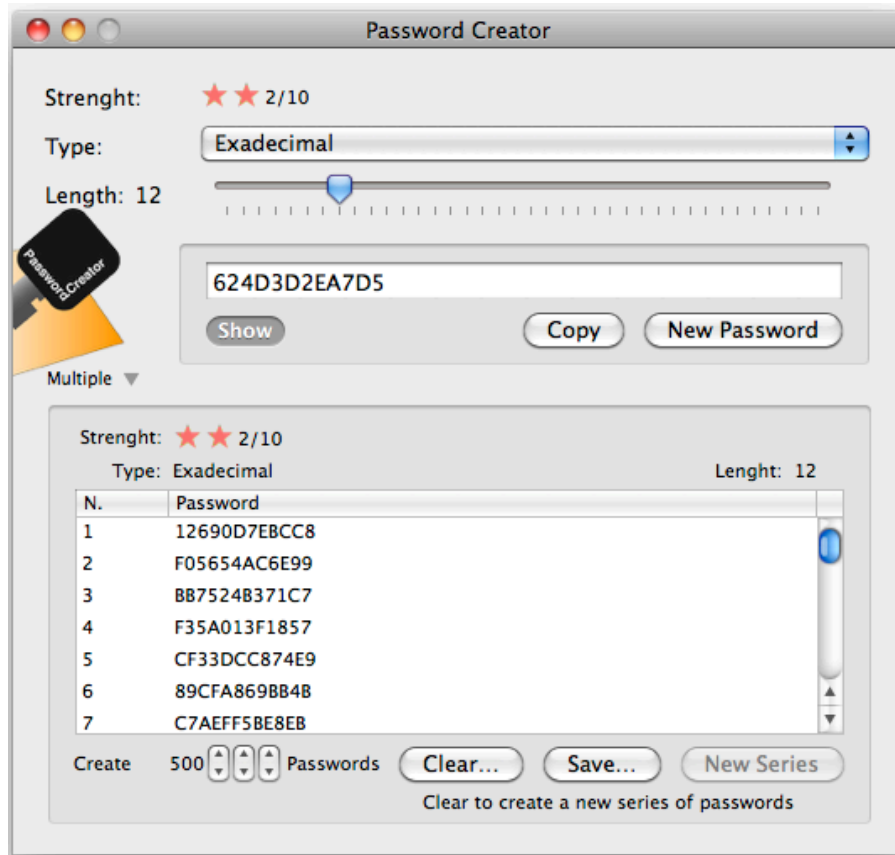


Then press again the 'New Series' button and you will obtain a new series with the selected characteristics

When you create a new series of password, stored in the table, over the table are displayed the characteristics used to create the series.

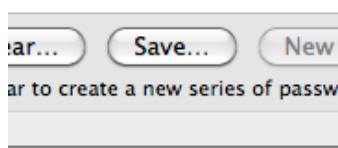


Note that these characteristics don't change if you change the characteristics of the password created in the upper part of the table. They change only when you press again the 'New Series' button, reflecting the characteristics of the passwords in the table.



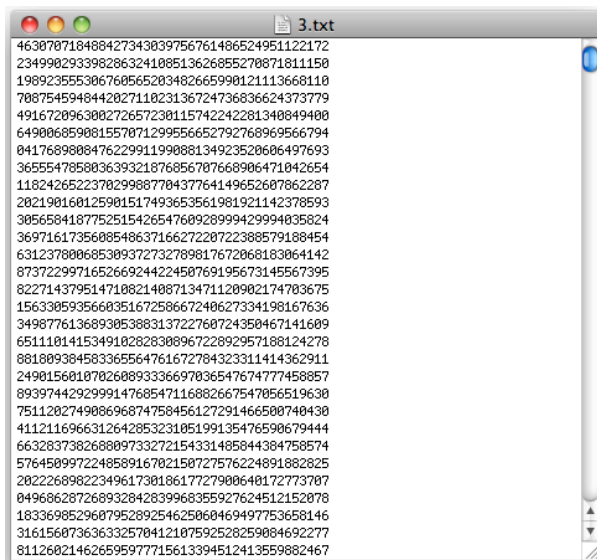
At any time, if you have a series in the table, you can save it on disk as a text file.

To save it press the 'Save...' button



Select in the following dialog panel the destination and the name for the file and save it on disk.

The file you saved on disk is a standard text file you can open with any available text editor, as example TextEdit available for free with any Mac. It will contain all the passwords you created, one per line. You can use this file for your purposes.



Help

Password Creator provides a standard help menu ...use the Password Creator Help command to access it!

You can use the Help menu also to visit our site or contact us with the 'Web Site' command.

Available under the Help menu also a PDF user guide.

Support

You can also obtain support using the 'Email Support' command. An email will be prepared using your email client with the correct address to send to.

Yes, we answer to your emails!